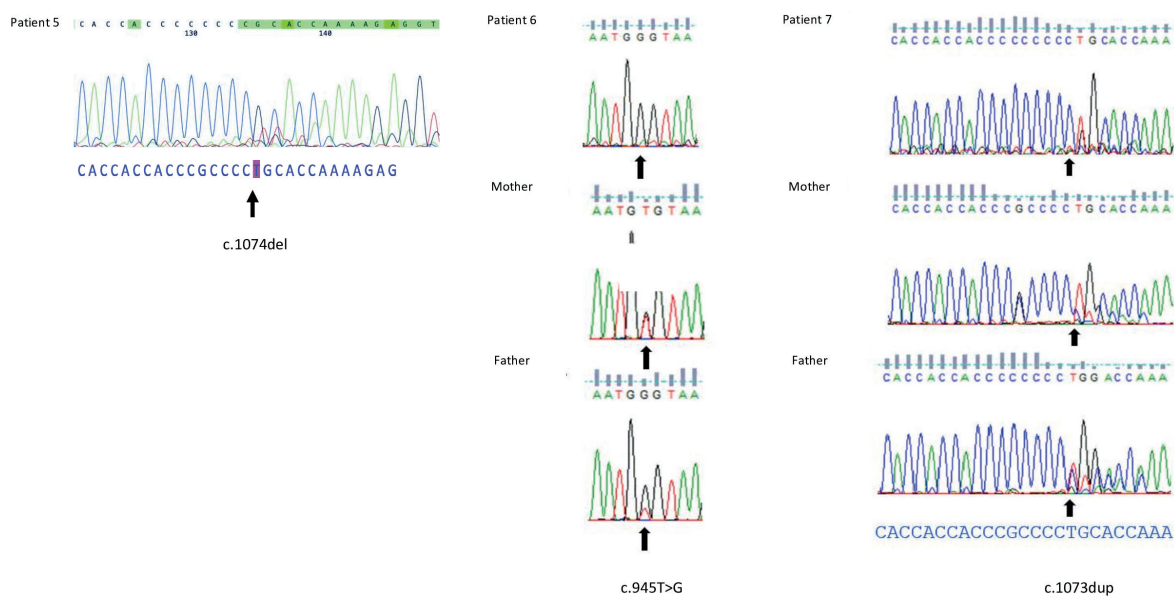


**Supplementary Table I.** The list of primers used in this study.

ANTXR2	Primers Forward-Reverse	Annealing Temperature
Exon 1	TTGCGACCCTCCTGAGCTTA-GAAGACAGCAACAGGGCACC	63
Exon 2	TGTTTCGTGGCATTGAAGAAGG-TGCAATACGACCTTGAGGCAC	63
Exon 3	GGAGTATGTGAGTGCTGGGAAG-GAGGCCTGAATCACCCTTG	60
Exon 4	CATTGTAGCACATCAATGTC-TGTCTCAACTCTGGAACAAC	53
Exon 5-6	AATAGTTAACACAAATTACCCTG-CCTTAAGACAATTATGTGGTTC	53
Exon 7	TTTAATTCCTGACCTTGAAC-TTTCCTCTAGATAATGACCAC	51
Exon 8	AAGTATGGAGAAGACCTCAAG-TTCCAACATGAGTTTCATATC	52
Exon 8 (Primers designed for the second time)	TCTGAGATCTATTGAAGTATGG-GTCTCAAGCGTGAACTAAATATA	51
Exon 9	GTTGGAAATATAGAGCTATGTC-AAGTTATAAAACAAATGTTGCC	51
Exon 10	ACTCTGATTGAAGCATGCTG-AAATGACCAATGTATATGTCACC	55
Exon 11	CTCTTTAAGTATGTTTCTGGC-ACAACACCAAAGATCCATAG	52
Exon 12	TGGAATTTGACCATAAGCTG-TGCAAACCTGAAACTTTGCTG	56
Exon 13	AATATTGGGTGGCAAGCTTC-AAATTTGGGCATGGTATCTG	57
Exon 14	CTTGAAATTTATGCATGTAAGTG-GTGTTAAGCACAAATGGATG	52
Exon 15	GGCTCAATAAGAGCCTGTTC-TTGCCAAGAAAGTATTTCAGC	55
Exon 16	GAAAGAAATGAGGGTAAAGAAG-CTGCCTCCATTATACTGACTC	52
Exon 17	GGTACTTTCCTTGGGTAATC-ATCAGCTATGTGAAAATGTG	51
ANTXR2- Intronic primers		
Intron7-Part 1	GAAGTAATCTTAATATCCAGTGCAG-TTAACTACCATGAAGAAAGGCTC	56
Intron 7-Part 2	AAGAAGAAACACTGTAGTAGTTCTG-ATCTTCCATAGTCTGCATTATGA	53
Intron 7-Part 3	GAAAGTGGGCAAATAAGGCTAATAC-AGTTGAGAACCAACGCTAAGT	59
Intron 7-Part 4	CAATTCTGATTCTAGAGTGAATTT-CTTATTCCTTATCCTCGAAAGTAT	53
Intron 7-Part 5	AGATTATCCATCACAAACCTGGAG-AGTGACTCAGGTAACACATTTCATTG	58
Intron 7-Part 6	TTGTTATTAGCAAATGTAAGCTATA-ATTAGTAATAACCTTGAGGTCTTCT	53
Intron 7-Part 6-Section 1	AGGAATTGCAGAGAAATGGTTTCTA-ACAGTGACAACAGTGAACCATCAA	59
Intron 7-Part 6-Section 2	CTATTTCTGCTACAGTCCTTACTTC-ACAGGAACAGAACTGCTCTTCTTA	58
Intron 9	GTATAAACAC-TCCAATTAACACAGCTT-TTATCTTGCCTACTCAATTGTGGAAC	58



**Supplementary Fig. 1.** Sanger Sequencing images of the Patient 5 (c.1074del), Patient 6 and his parents (c.945T>G), Patient 7 and his parents (c.1073dup).